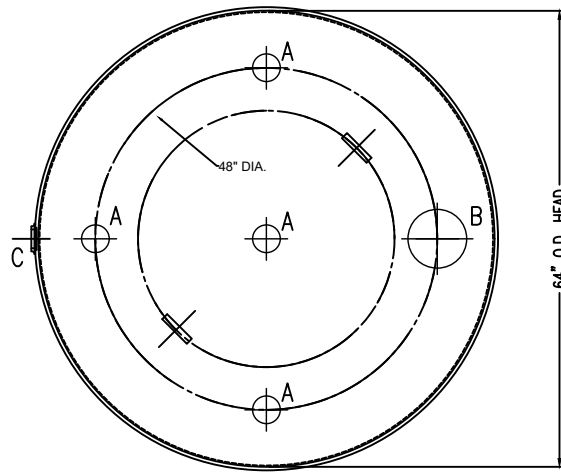


FRONT VIEW



TOP VIEW

PRELIMINARY DRAWING ONLY

DRAWING REVISIONS			
REV.	DESCRIPTION	DATE	APRVL

DRAWING APPROVAL:

SIGN: \_\_\_\_\_

DATE: \_\_\_\_\_

FLANGE OPENING LEGEND	
A	2" NPT FLANGE
B	8" INNER E- VENT
C	8" OUTER E-VENT
D	-
E	-
F	-

ALL RIGHTS RESERVED. THIS DRAWING OR ANY PART THEREOF MUST NOT BE REPRODUCED IN ANY FORM UNLESS GIVEN PERMISSION BY A REPRESENTATIVE OF THIS COMPANY

806 Island Ford Road  
McGaheysville, VA 22840

Phone 800-522-4980  
540-289-5051  
FAX 540-289-7592



**ATLANTIC**  
**CONTAINMENT**



DESCRIPTION: 3,000 GALLON ROUND DW VERTICAL

CUST: ATLANTIC CONTAINMENT	DATE: 12/21/20	DWG BY: NM
MATL: CARBON STEEL, 7 GA		
WELD: MIG (EXTERNAL ONLY)		
TYPE: UL 142 LISTED	DWG NO. AC3KVTD	REV. NO. -
CAPACITY: 3,000 GALLONS		
WEIGHT: 4200 LBS		
EXT. FINISH: PRIMER		