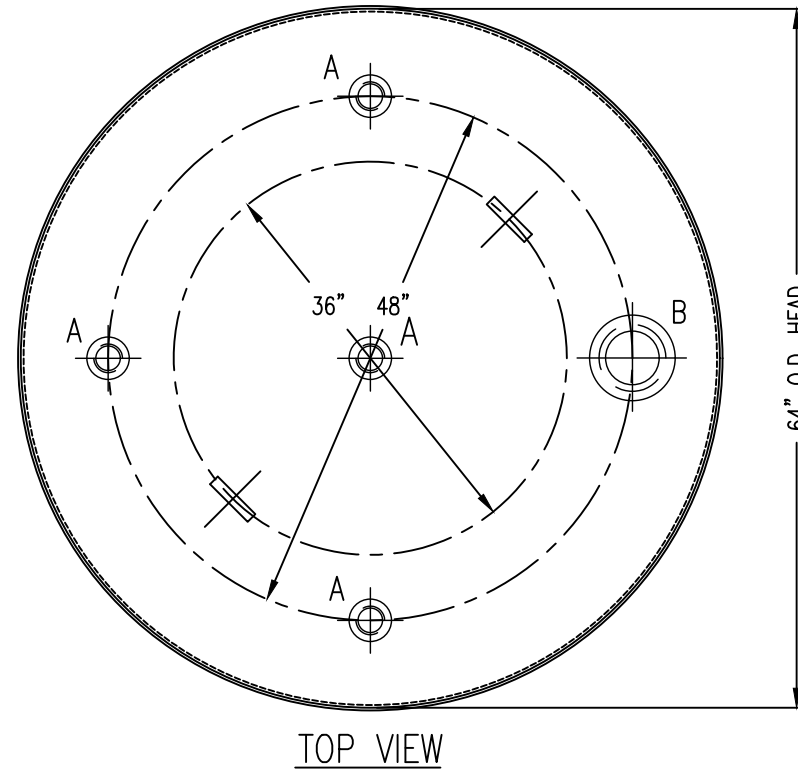
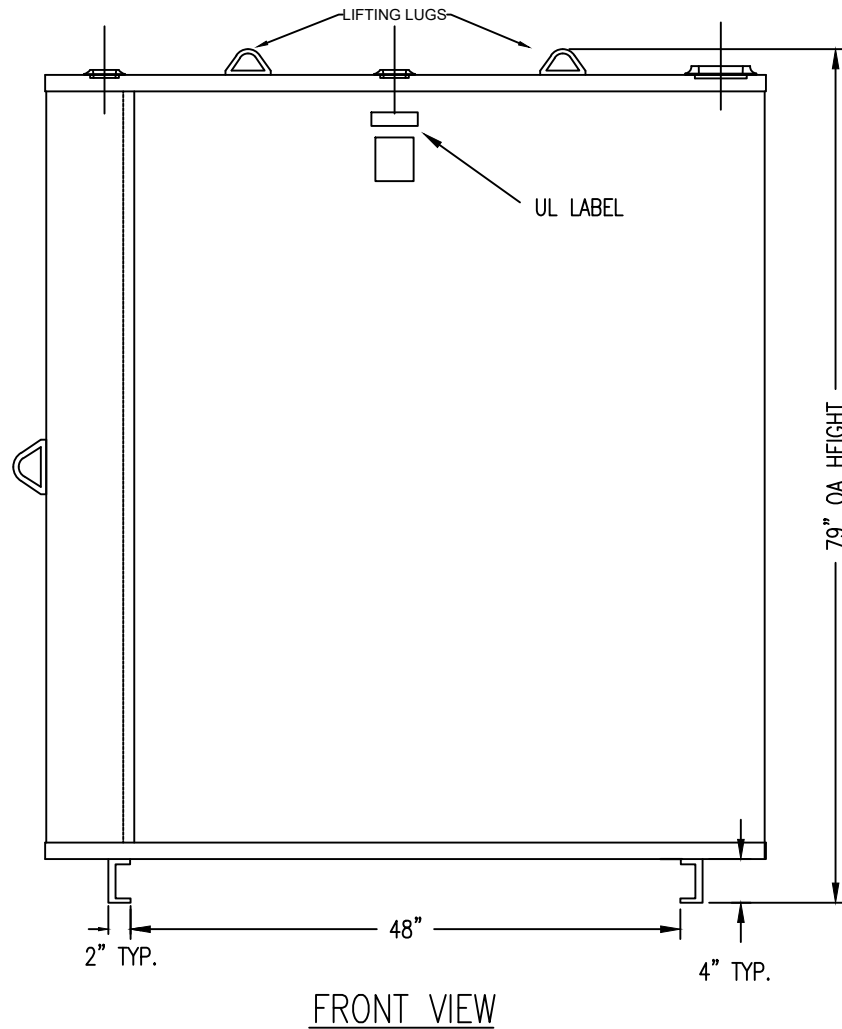


66" L x 66" W x 79"H O.A. DIM.

DRAWING REVISIONS			
REV.	DESCRIPTION	DATE	APRVL
A	UPDATED SUPPORTS AND + 2" OPENING	12/21/20	NM



DRAWING APPROVAL:

SIGN: \_\_\_\_\_

DATE: \_\_\_\_\_

UNLESS NOTED, TOLERANCES ARE +/- 1-3"

FLANGE OPENING LEGEND	
A	2" NPT FLANGE
B	6" INNER E- VENT
C	-
D	-
E	-
F	-

ALL RIGHTS RESERVED. THIS DRAWING OR ANY PART THEREOF MUST NOT BE REPRODUCED IN ANY FORM UNLESS GIVEN PERMISSION BY A REPRESENTATIVE OF THIS COMPANY

806 Island Ford Road  
McGaheysville, VA 22840

Phone 800-522-4980  
540-289-5051  
FAX 540-289-7592



**ATLANTIC**  
**CONTAINMENT**



DESCRIPTION: 1000 GALLON ROUND SW VERTICAL

CUST: ATLANTIC CONTAINMENT

MATL: CARBON STEEL, 12 GA

WELD: MIG (EXTERNAL ONLY)

TYPE: UL142 LISTED

CAPACITY: 1000 GALLONS

WEIGHT: 895 LBS

EXT. FINISH: PRIMER

DATE: DWG BY:

07/15/21 NM

DWG NO. REV. NO.

AC1KVT A

PRELIMINARY DRAWING ONLY